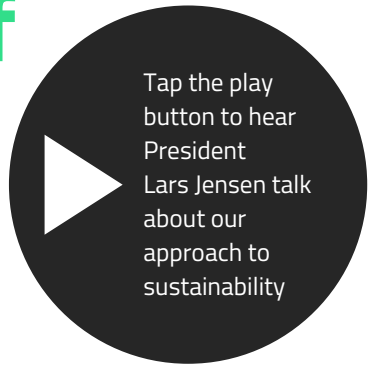


# ENABL A/S - ESG in brief

Enabl A/S is part of Eltronic Group. As a group, we have set out initiatives to document and reduce our own footprint. We want to work proactively with the Green House protocol scope 1, 2, and 3 and we have a clear ambition: We will work to lower our own emissions and never forget the emissions we cause through the products and solutions we create.

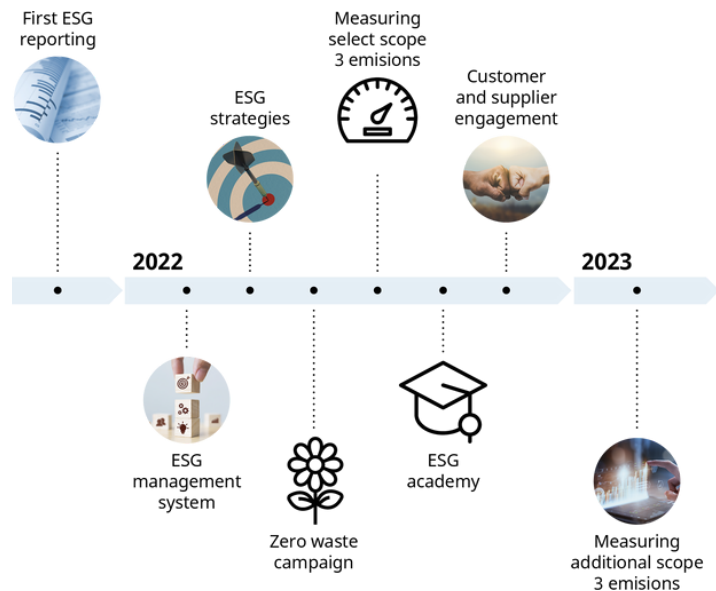


➤ Read our latest ESG report on Eltronic Group's website [here](#)

## Sustainability roadmap

To guide us on our sustainability journey, we have developed a roadmap. In 2021, we have taken the first steps and anchored sustainability within our group. In 2022, we want to improve our framework and our data collection. In the near future, we want to reach scope 3 – this is where we will be able to make an actual difference. The roadmap highlights how we integrate sustainability into:

- business practices and processes
- systems
- solutions and products
- new business opportunities

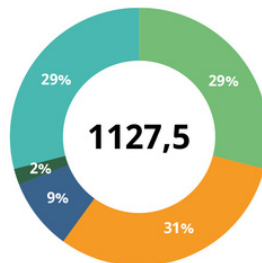


## Environmental impacts

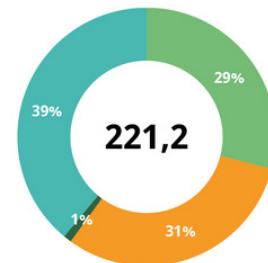
In 2020/2021, we have had various environmental impacts through our operations. We have summarized this for Enabl A/S.

These numbers include emissions for scope 1 and 2. We do not yet have data for scope 3.

Energy consumption  
MWh usage

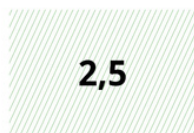


Emissions from energy  
tonnes CO<sub>2</sub>e emitted

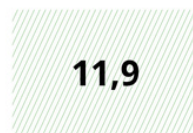


● Fossil Heating ● Grid Electricity ● Renewable Electricity ● District heating ● Fuels

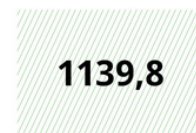
Coolant leakage  
tonnes CO<sub>2</sub>e emitted



Tonnes CO<sub>2</sub> avoided  
tonnes CO<sub>2</sub>e avoid through renewable energy



M<sup>3</sup> water consumption



% of renewable energy



## Anchoring policies to guide us

Our approach to working with sustainability is led by the ESG factors. We divide our efforts into three areas: environmental, social, and governance. We have created specific policies to help ensure that our purpose and values are reflected in the work we do in every aspect of our business.

➤ Read our policies on Eltronic Group's website [here](#)

**ENABL**  
Wherever Wind Is